

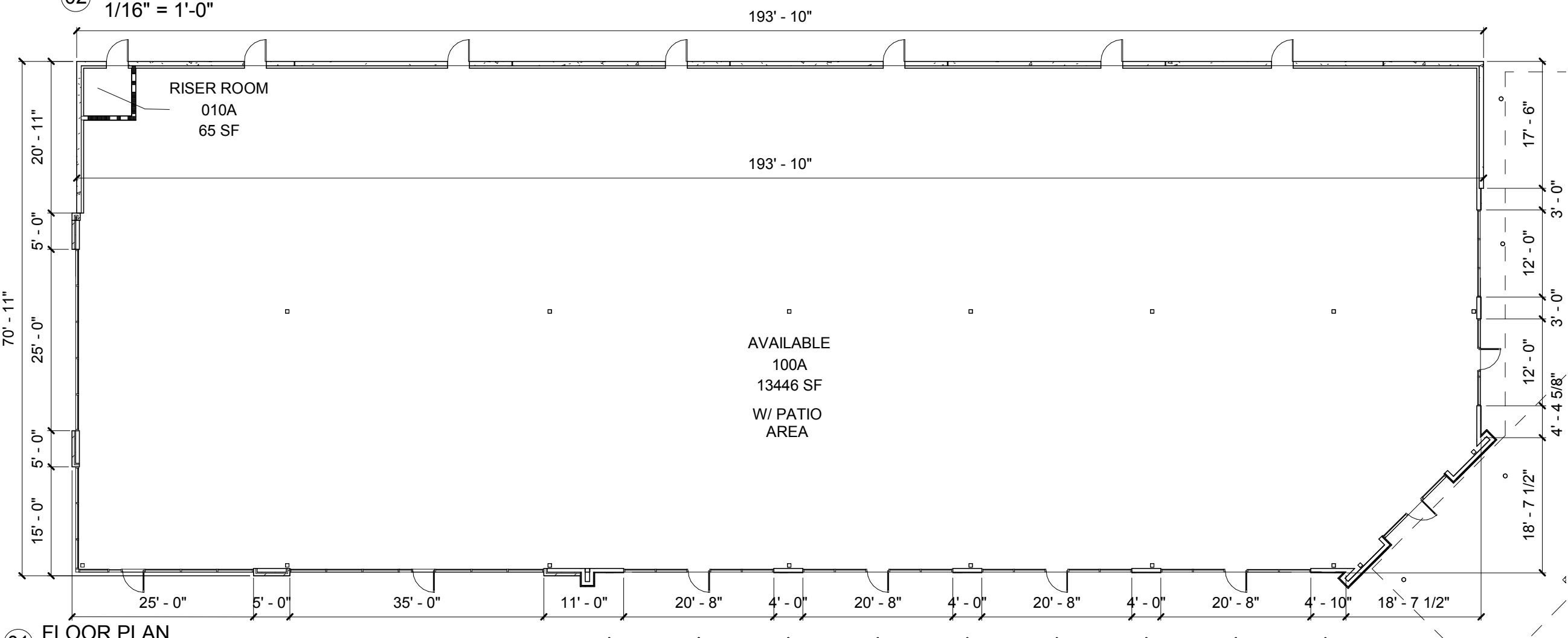
- T.O. COPING 3A
125' - 2"
- T.O. COPING 2A
123' - 6"
- T.O. COPING 1A
122' - 5"
- T.O. STOREFRONT 2A
112' - 0"
- T.O. STOREFRONT 1A
110' - 0"
- FINISH FLOOR
100' - 0"

SHOWN IN OBLIQUE

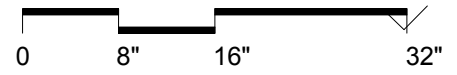
02 **SOUTHWEST ELEVATION**
1/16" = 1'-0"



LEASABLE AREA - A		
#	TENANT	SQFT
010A	RISER ROOM	65 SF
100A	AVAILABLE	13446 SF
TOTAL AREA:		13512 SF



01 **FLOOR PLAN**
1/16" = 1'-0"



LOD - BUILDING A

HEATH RETAIL
Heath, TX 75032

Job Number: 16253.01
 File Name: C:\Users\vcarrasco\Documents\Autodesk\Revit\Heath Grocery Anchor-V18_vicente.carrasco.rvt
 Date: 01.23.18
 Drawn by: vc

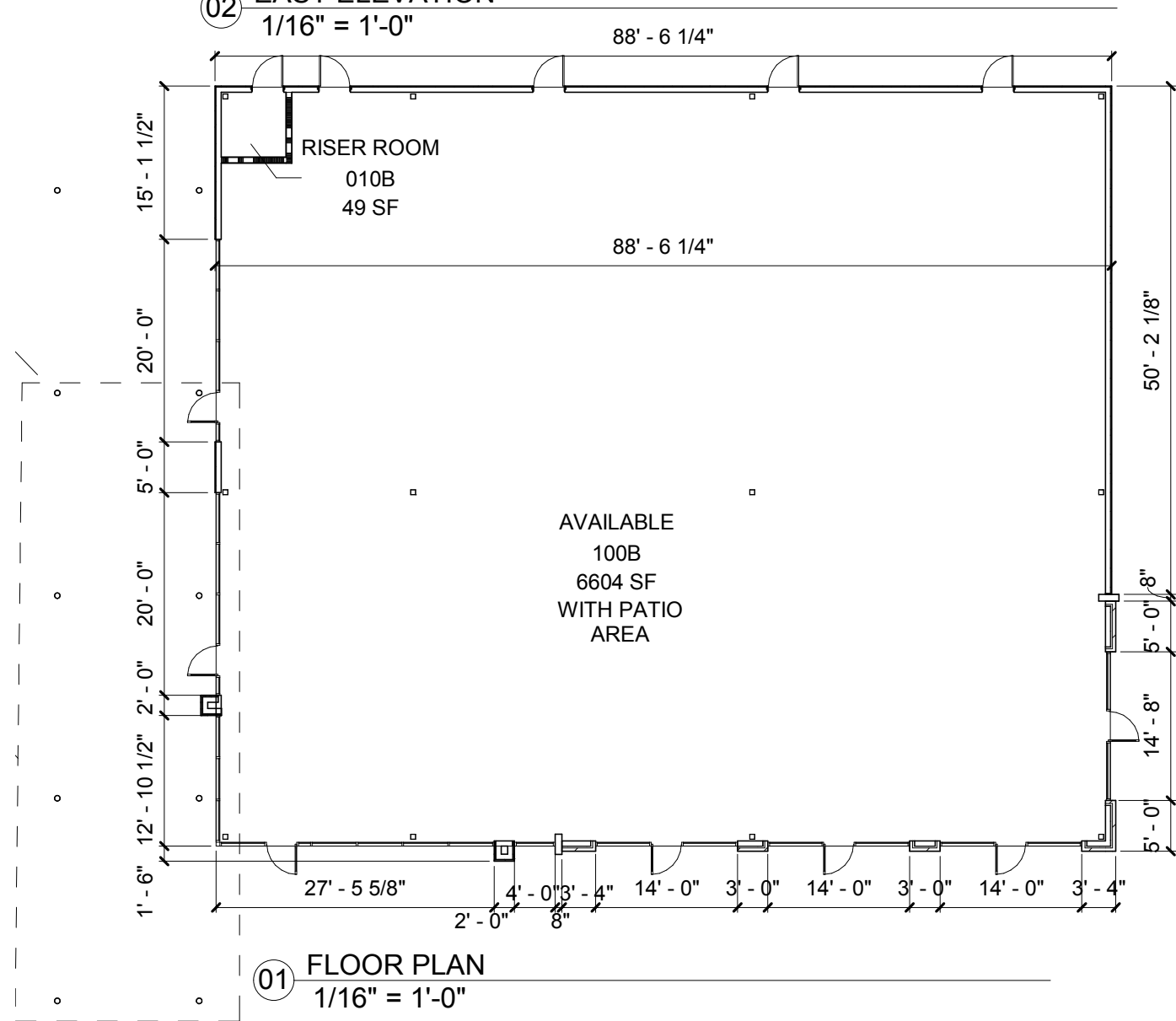


2808 Fairmount Street, Suite 300
Dallas, Texas 75201 | 214.303.1500

3300 West 7th Street, Suite 110
Fort Worth, Texas 76107 | 817.303.1500



02 EAST ELEVATION
1/16" = 1'-0"



01 FLOOR PLAN
1/16" = 1'-0"

LEASABLE AREA - B		
#	TENANT	SQFT
010B	RISER ROOM	49 SF
100B	AVAILABLE	6604 SF
TOTAL AREA:		6653 SF

